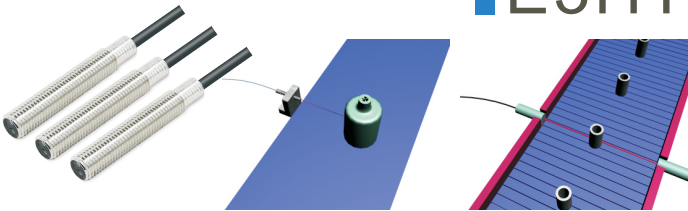


M8 Cylindrical Photoelectric Sensor

E3HT

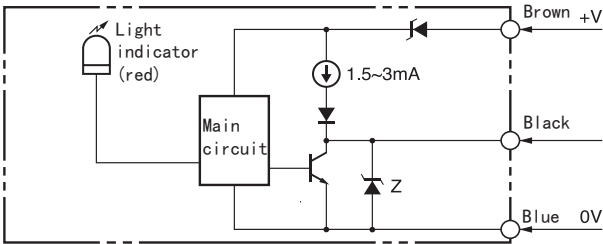
- Embedded mounting is feasible.
- Filled with vibration-resistant resin.



Category

Sensing method	Appearance	Connection method	Sensing distance	Model (NPN output)	
				Light-ON	Dark-ON
Diffuse-reflective		Pre-wired (2m cable)	□ 35mm	E3HT-DS3E1	E3HT-DS3E2

I/O Circuit Diagram



Ratings and Specifications

Model	E3HT-DS3E□
Sensing distance	35mm (white pater 30*30 mm)
Differential travel	20% max. of sensing distance
Light source (wavelength)	Infrared LED (940 nm)
Power supply voltage	12 to 24 VDC ±10%, ripple (p-p): 10% max.
Current consumption	30 mA max.
Control output	Load power supply voltage: 24 VDC max., Load current: 80 mA max. (residual voltage: 1 V max.), NPN output.
Protection circuits	Output short-circuit protection, reverse connection protection
Response time	Operate or reset: 3 ms max.
Ambient illumination	Incandescent lamp: 3,000 lx max., sunlight: 10,000lx max.
Ambient temperature	Operating: -25 to 55°C (with no icing or condensation) Storage: -30 to 70°C (with no icing or condensation)
Ambient humidity	Operating: 35% to 85% (with no condensation) Storage: 35% to 95% (with no condensation)
Insulation resistance	20 MΩ min. (at 500 VDC)
Dielectric strength	500 VAC at 50/60 Hz for 1 minute
Vibration resistance (destruction)	10 to 55 Hz, 1.5 mm double amplitude for 2 h each in X, Y and Z directions
Shock resistance (destruction)	500 m/s ² , for 3 times each in X, Y and Z directions
Degree of protection	IEC IP66
Connection method	Pre-wired models (standard length: 2m)
Weight	Approx. 80 g
Material	Brass
Accessories	Mounting nuts and washers

Dimensions

Unit:mm

